

City Consortium Programme

The City Consortium is a group of six leading, global law firms: Freshfields, Herbert Smith Freehills, Hogan Lovells, Linklaters, Norton Rose Fulbright and Slaughter and May.

The role of City lawyers has transformed, going beyond technical expertise to become trusted business advisers who have the ability and confidence to operate and build relationships in a commercial setting.

The introduction of the Solicitors Qualifying Examination (SQE) has given the City Consortium the opportunity to transform how we train our trainees to succeed in this fast-paced and rapidly evolving environment.

We value education and believe that by investing in you, our future trainees, before you join us and by giving you the time and space to learn, you will be able to make a meaningful contribution to practice from day one.

You will need to pass the new centralised assessments, which will test your knowledge across a wide range of law and practice (SQE1) as well as your core legal skills (SQE2). Above and beyond the SQE, we have partnered with BPP to create a unique and market-leading Plus Programme designed to prepare you for practice as a City lawyer.

City Consortium Programme



Duration

12 months



Locations

London Holborn



Start dates*

September and February



Delivery

Face-to-face (with supporting online materials)

*Your sponsor firm will indicate which intake to join.



Qualification achieved

Master of Laws in Legal Practice (Solicitor) (awarded by BPP University)

How is my programme structured?

On joining the programme, you'll already have studied either a qualifying law degree or a law foundations course. The programme comprises the following: SQE1 Preparation, SQE2 Training and The Plus Programme.

SQE1 Preparation

Business Law and Practice

Dispute Resolution (revising Contract and Tort)

Criminal Practice (revising Criminal Law)

Property Law and Practice (revising Land Law)

Wills and the Administration of Estates (revising Trusts)

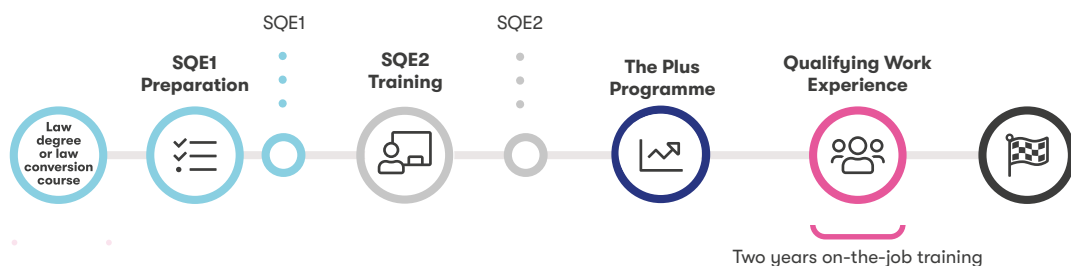
Legal Services, Professional Conduct, Taxation, and Solicitors' Accounts will also be covered together with helpful revision materials for the Legal System of England and Wales.

SQE2 Training

This module builds on the foundations laid in the SQE1 Preparation and prepares you for the SQE2 assessments. It offers extensive diagnostic testing and practice of SQE2 skills tasks across all the SQE legal contexts. It also includes live intensive coaching workshops that simulate the SQE2 exam experience, with personalised feedback.

The Plus Programme

The Plus Programme will look and feel like working in a City law firm, as you rotate through three-week mini-training seats in four key practice areas, supervised by a dedicated team of BPP tutors. We have analysed what makes our trainees really successful, and on top of legal expertise, you will develop the professional behaviours that will set you up to be desk-ready for the start of your training contract.



For more information
bpp.com/courses/law

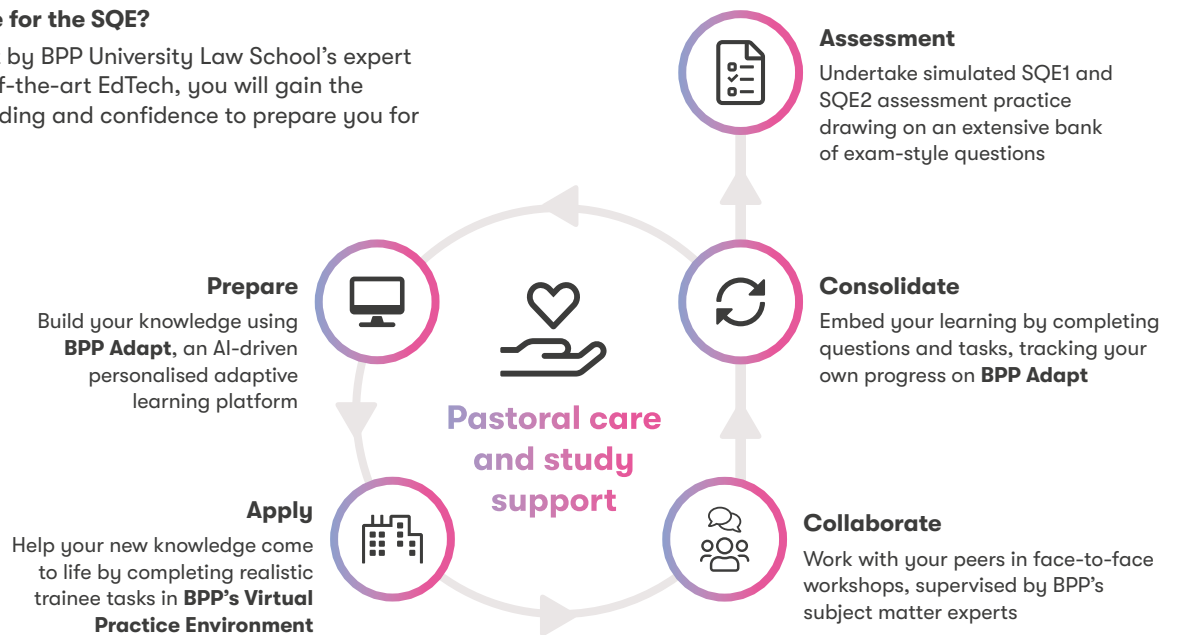
How will I learn?

Our innovative approach ensures our teaching provides you with the latest skills you need to succeed in a modern legal environment, providing the most effective and dynamic learning experience.

- You'll be attending regular workshops facilitated by expert subject matter tutors and working collaboratively with your peers in a live classroom
- Through our Virtual Practice Environment, you will experience realistic briefs and case handling in a way that mirrors legal practice in a firm or chambers
- Through our innovative learning platform, BPP Adapt, you can track your progress, understand your strengths and target areas for improvement, ensuring you're fully prepared to pass your exams
- You will have the support of a dedicated personal tutor and access to The Hub, our learning environment which provides 24/7 access to learning materials and resources
- You can choose to volunteer your time for a range of pro bono projects which will also help to enhance your knowledge and skills

How will you prepare for the SQE?

Supported throughout by BPP University Law School's expert tutors and our state-of-the-art EdTech, you will gain the knowledge, understanding and confidence to prepare you for the SQE assessments.



How will I be assessed?

You will sit the external SRA centralised assessments during the programme. You'll also sit internal BPP assessments that will count towards your University academic award and will help prepare you for the SRA centralised assessments.

- For SQE1 Preparation you'll sit multiple choice assessments reflecting the knowledge and style of assessment as the SQE1 papers
- For SQE2 Training you'll be assessed through a personal reflective statement and portfolio of evidence linked to the skills that are assessed in SQE2
- For The Plus Programme you'll experience a variety of assessment formats to measure the development of your specialist knowledge and practice-focused skills

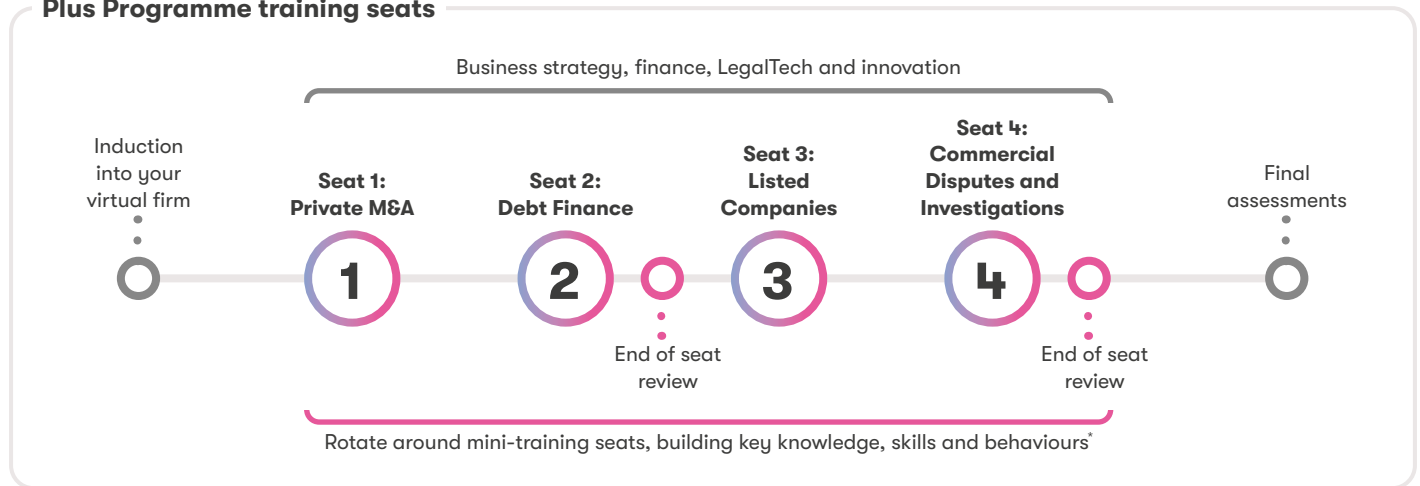
How do I apply?

Your sponsoring employer will be in contact with you with more information on when and how to make your application for the course nearer the time.







What is The Plus Programme?

The Plus Programme will look and feel like working in a City law firm, as you rotate through two-week mini-training seats in four key practice areas, supervised by a dedicated team of BPP tutors. We have analysed what makes our trainees really successful, and on top of legal expertise, you will develop the professional behaviours that will set you up to be desk-ready for the start of your training contract.

Plus Programme training seats



*Different students will experience these seats in a different order.

-  Experience **realistic transactions** and cases as they develop
-  **Ideal balance** of face-to-face and online learning
-  Focus on **key skills and professional behaviours** for successful trainees
-  **Supervision** by a dedicated team of subject matter experts
-  Work **collaboratively** with other future trainees and build your professional network
-  Continual **consolidation** of developing knowledge and skills

For more information

 bpp.com/courses/law

Disclaimer: This information is accurate as at the date of publication, February 2025. It is subject to change. This document is for guidance only and does not form part of any contract. For more information, visit bpp.com. ©BPP University Limited 2025. 09807.