

BONELLIEREDE
BREDIN PRAT
DE BRAUW
HENGELER MUELLER
SLAUGHTER AND MAY
URÍA MENÉNDEZ

BEST FRIENDS BIENNALE

MAY 2024

CONTENTS

PROGRAMME 3

ADDITIONAL INFORMATION 6

SPEAKERS / CONTRIBUTORS

HAKLUYT 11

BRUNSWICK AND KATE BLEWETT 13

HECKFIELD'S CULINARY DIRECTORS 15

ATTENDEE INFORMATION

BONELLIEREDE 16

BREDIN PRAT 18

DE BRAUW 20

HENGELER MUELLER 22

SLAUGHTER AND MAY 24

URÍA MENÉNDEZ 28





BEST FRIENDS BIENNALE 2024
HECKFIELD PLACE
21-23 JUNE 2024

PROGRAMME

All elements of the programme will take place on-site at Heckfield Place, of which we have exclusive use for the duration of the programme.

Time	Activities	Location
Late afternoon	Arrival at Heckfield Place (Check-in opens at 16:00)	Reception Heckfield Place, Heckfield Hook, RG27 0LD
18:00 – 20:00	Welcome reception and speeches	Main terrace* <i>* In event of wet weather, location will change to Moon bar</i>
20:00 – 00:00	Informal dining experience centred on an open fire	Hearth restaurant



These graphics have been designed by visual scribing artist, Caroline Chapple, who will be joining us on Saturday to capture the Biennale in illustrations.



Saturday, 22 June 2024

Time	Activities	Location
07:00 – 09:00	Breakfast and optional leisure activities	Marle restaurant for breakfast Reception for activity meeting point
09:30 – 12:30 (incl. break)	‘Making Sense of a Volatile World’ Led by Sir Oliver Robbins KCMG CB and Andrew Exum of global strategic advisory global strategic advisory firm, Hakluyt.	Assembly room and courtyard
12:45 – 14:30	Lunch	Walled garden and the Glass house* * In event of wet weather, location will change to Hearth restaurant
14:45 – 15:45	‘The Power of Storytelling’ With Sarah West of pre-eminent communications and advisory firm, Brunswick, and Kate Blewett, a BAFTA award-winning documentary maker	Screening room

15:45 – 18:15	Free time and optional leisure activities	Reception for activity meeting point
18:15 – 19:30	‘A tasting journey’ A flavoursome team activity - prizes will be awarded to the winners!	Reception meeting point
19:45 – 22:15	Farm to table dining experience, encompassing a menu designed by Skye Gyngell at Green Michelin Star restaurant, Marle	Marle restaurant
22:15 until late	After-dinner drinks and live music	Marle restaurant

Sunday, 23 June 2024

Time	Activities	Location
08:00 – 10:00	Breakfast and optional leisure activities	Marle restaurant for breakfast Reception for activity meeting point
11:00 onwards	Guest check-out. Those with later travel plans are welcome to stay and explore the estate and Bothy spa	Reception

ADDITIONAL INFORMATION

Heckfield Place

Transfers

By Train

By Taxi

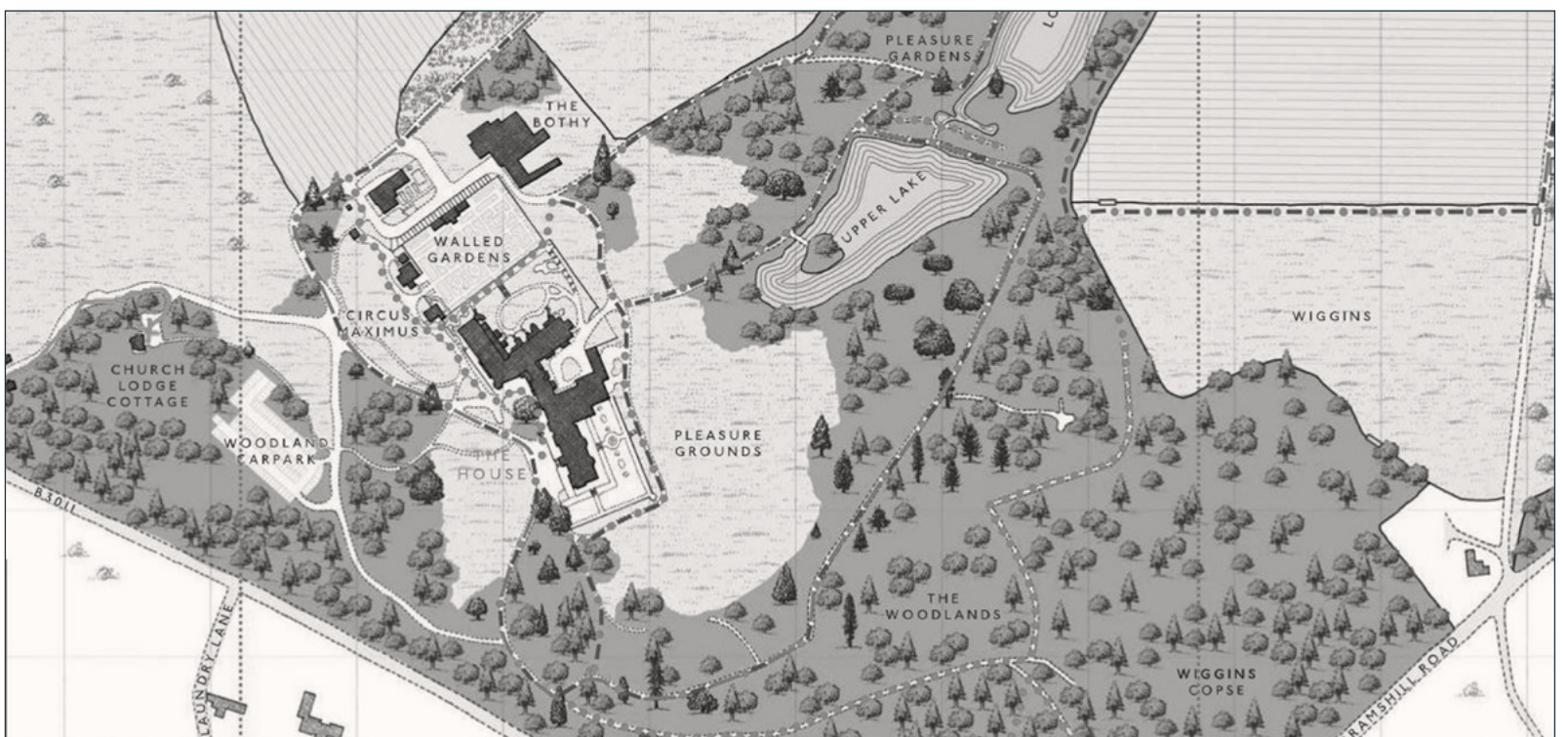
Dress code

Activities

Contacts

Heckfield Place

Heckfield Place is a country haven with a lovingly restored Georgian family home at the heart of a working estate. This beautiful rural setting is surrounded by 438 acres of ancient heather, woodland, gardens and meadows which have been sculpted over centuries.



Transfers

Heckfield Place is a 40 to 45 minute taxi journey from Heathrow Airport. We recommend pre-booking transport from Heathrow (or using the taxis at Heathrow / Uber on arrival).

Return home: We recommend pre-booking taxis with Heckfield Place in advance.

The reception desk will be ready to arrange taxis for Sunday depending on your onward travel plans.

By train

For those arriving by Eurostar, or who may already be in London, we recommend heading to Paddington train station and catching the fast train to Reading.

From there, take a station taxi to Heckfield Place. Taxis can be found here 24 hours a day. The taxi rank is located on the south side of the station, just outside Platform 1. This is approximately a 20-minute journey.

By taxi

Addison Lee (to and from Heathrow)	Addison Lee
Blacklane Global Chauffeur Service (to and from Heathrow)	Blacklane Global Chauffeur Service
B&B taxis (local to Heckfield Place)	+44 (0)1276 600767 / +44 (0) 07785 577851 enquiries@bandb-taxis.com

Dress code

Friday evening	Smart casual/relaxed (no ties) business attire
Saturday daytime	Smart casual
Saturday evening	Evening-wear, in keeping with the relaxed country-house style setting
Other	Sportswear for optional activities, as selected

Heckfield Place

There is an abundance of activities to take part in during your stay, as well as over 400 acres of surrounding woodlands to explore. During periods of free time, there will be opportunities to take part in various activities as listed below:

Friday 21 June

16:30* to 17:30

- Yoga class
- Woodland movement class (consists of walking, running, squats, lunges etc.)
- Guided bike tour (2 electric bikes also available)
- Nature immersion walk - focused on the senses and includes meditation
- Spa treatment†
- Bothy facilities - gym, swimming pool, steam and sauna

Saturday 22 June

07:00* to 09:00

- Bothy facilities - gym, swimming pool, steam and sauna (07:00 - 09:00)
- Morning lake swim (07:00 - 09:00)
- Yoga class (07:00 - 07:45)
- Guided trail run (07:45 - 08:45)
- Nature immersion walk - focused on the senses and includes meditation (07:45-08:45)
- Pilates class (08:00 - 08:45)
- Breathwork class (08:00 - 08:45)

16:15* to 17:15

- Farm tour (*highly recommended*)
- House art tour
- Spa treatment†
- Bothy facilities - gym, swimming pool, steam and sauna
- Yoga class
- Pilates class
- Woodland movement class (consists of walking, running, squats, lunges etc.)
- Guided bike tour (2 electric bikes also available)
- Afternoon tea in the lounge available for all guests

Sunday 23 June

07:00* to 11:00

- Bothy facilities - gym, swimming pool, steam and sauna (07:00 - 17:00)
- Morning meditation and breathwork class, Session 1 (08:00 - 08:30)
- Morning meditation and breathwork class, Session 2 (08:30 - 09:00)
- Spa treatment†

* *Please meet at Reception ten minutes before scheduled activities or head directly to the Bothy to use their facilities and for spa treatments. Afternoon tea will be served in the lounge.*

† *Spa treatments need to be booked in advance and are subject to availability. Please contact **Katie Ray** for further information.*

Contacts

The full Heckfield team will be on hand for the duration of your stay.

In addition, our Slaughter and May team will be on-site to help with any queries on the Biennale programme:



AZADEH NASSIRI

Partner

+44 (0)7824 592 932

azadeh.nassiri@slaughterandmay.com

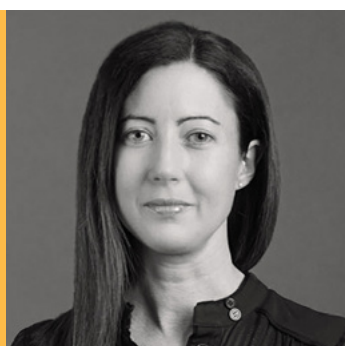


HARRY HECHT

Partner

+44 (0)7824 592 910

harry.hecht@slaughterandmay.com



JORDINA SMITH

Head of International Strategy

+44 (0)7768 234 003

jordina.smith@slaughterandmay.com



NICOLA BAILEY

Head of Events

+44 (0)7795 358 849

nicola.bailey@slaughterandmay.com



KATIE RAY

Senior Events Manager

+44 (0)7894 839 830

katie.ray@slaughterandmay.com



SPEAKERS

Hakluyt

Hakluyt advises decision-makers on the opportunities and risks facing their businesses. Clients trust Hakluyt with their most important commercial issues, and value Hakluyt's discretion and independence of thought. For over 25 years, Hakluyt has provided judgement, insights and advice in a wide range of situations to leaders of many of the world's most prestigious companies and most successful investment firms. Hakluyt work with at least one of the world's top five corporations in every major sector globally, and around 40 per cent of the world's largest companies by market capitalisation. They also support more than three quarters of the top 20 private equity firms in the world by assets under management, and some of the most respected sovereign wealth and pension funds.

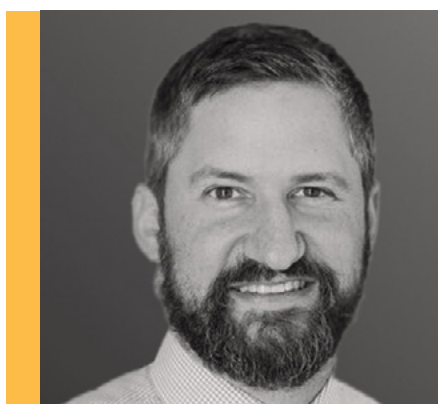
Hakluyt



Sir Oliver Robbins
KCMG CB

Olly joined Hakluyt in 2023 and leads Hakluyt's coverage of corporate clients across EMEA.

Olly joined from Goldman Sachs, following over two decades as a British civil servant. He has advised four prime ministers, during a career spanning economic policy and the 2008 financial crash, public service reform and spending, corporate finance on the public/private boundary, counter-terrorism and geopolitics. He has also led international negotiations covering the G8, 5-Eyes Intelligence Alliance, and EU withdrawal.



Andrew Exum

Andrew joined Hakluyt in 2017 and led Hakluyt's business in Texas before co-establishing the Washington, DC office in 2021. Today Andrew leads Hakluyt's business in the American South.

Prior to Hakluyt, he served as US Deputy Assistant Secretary of Defense for Middle East policy. Andrew also served as an officer in the US Army, leading light infantry and special operations units in Iraq and Afghanistan.

SPEAKERS

Brunswick and Kate Blewett.



Sarah West

Sarah is the UK Managing Partner of Brunswick Group.

Sarah advises clients across sectors, with a specialist interest in the technology, media and consumer sectors. She joined Brunswick in 2006 from BlackBerry where she was responsible for launching the brand in EMEA.

She specialises in corporate story development and stakeholder communications at moments of change including crisis, M&A, IPO and leadership renewal. Sarah has advised clients in the UK and internationally, working with businesses that have strong consumer brands like Farfetch, Warner Bros. Discovery, Just Eat and Monzo.

Brunswick and Kate Blewett.



Kate Blewett

Kate Blewett is a multi Emmy, BAFTA award-winning documentary producer and director who makes global films focusing on social issues of exploitation, abuse and neglect challenging governments, corporates and organisations worldwide. Among her 125 awards are 5 Emmys, BAFTA, 3 US Peabody, Amnesty International, Royal Television, Prix Italia, Robert F. Kennedy and Monte Carlo UNESCO Special Jury award. Kate has filmed in over 70 countries (often undercover) including China, USA, India, Russia, Africa, Philippines, Thailand, Bulgaria, Ukraine and the UK. Her most highly regarded films are The Dying Rooms, China's Stolen Children, Slavery, India's Carpet Slaves, The Transplant Trade, Bulgaria's Abandoned Children and Children of the Cybersex Dens.

Kate has interviewed extensively around the world, using her personal touch to access people's private lives, emotions and opinions – often never heard before. She campaigns hard for change alongside her films and her work has led to the closure of institutions, changes in laws, the release of slaves, and reduced child trafficking activities. She speaks globally at child rights conferences, global slavery meetings, corporations, charity events, schools and universities to raise awareness and inspire audiences to take action on a variety of issues across the world.

HECKFIELD'S CULINARY DIRECTORS

Skye and Michael have designed bespoke menus for the Biennale, using seasonal ingredients prepared with minimal disruption to the natural world.



Skye Gyngell

Originally from Australia, Skye Gyngell is now one of Britain's most respected and acclaimed chefs. After initially training in Sydney and then Paris, Skye moved to London to work at The French House. From there, she worked with a number of high-profile private clients, as well as becoming the head chef at Petersham Nurseries and then, as executive chef, setting up the restaurant Spring, at Somerset House.

Skye joined Heckfield Place as Culinary Director before its opening, and has been instrumental in the Marle restaurant being honoured with a prestigious Green Michelin Star. Her signature style of dishes created using local, fresh ingredients underpins all that is served at Heckfield Place, with Skye working closely with the Home Farm team to serve produce grown on the estate.



Michael Chapman

Michael is the Executive Chef at Heckfield Place. With his exceptional culinary skills and unwavering passion for gastronomy, Michael Chapman has contributed to the Marle restaurant's reputation as a culinary destination of choice. Collaborating closely with Skye Gyngell, he has helped shape the restaurant's philosophy of using seasonal, organic, and locally sourced ingredients.

ATTENDEE INFORMATION

BONELLIEREDE



MARCO ADDA

BONELLIEREDE

Partner
Milan

Tax
Partner since 2016



RICCARDO BORDI

BONELLIEREDE

Partner
Genoa, Milan

Litigation and Dispute Resolution
Partner since 2019



MASSIMILIANO DANUSSO

BONELLIEREDE

Chairman
London

Banking & Finance
Partner since 2016



MATTEO EREDE

BONELLIEREDE

Partner
Milan

Corporate
Partner since 2024



BONELLIEREDE



FRANCESCA MARCHETTI

BONELLIEREDE

Partner
Rome

Banking & Finance - Member of the Biennale Committee
Partner since 2021



STEFANO MICHELI

BONELLIEREDE

Partner
Milan

Corporate
Partner since 2005



RICHARD SAMUEL

BONELLIEREDE

Partner
London

Disputes, International Arbitration
Partner since 2024

BREDIN PRAT



ALEXANDER BLACKBURN

BREDIN PRAT

Partner
Paris

Corporate, M&A
Partner since 2006



LAURA FADLALLAH

BREDIN PRAT

Partner
Paris

Arbitration
Partner since 2022



CHRISTINE LENIS

BREDIN PRAT

Partner
Paris

Corporate, M&A - Member of the Biennale Committee
Partner since 2022



DIDIER MARTIN

BREDIN PRAT

Senior Partner
Paris

Corporate
Partner since 1992



BREDIN PRAT



JOSÉ MARÍA PÉREZ

BREDIN PRAT

Partner
Paris

Corporate, Arbitration
Partner since 2003



MARIE-CÉCILE RAMEAU

BREDIN PRAT

Partner
Paris

Competition
Partner since 2009



MARINA WEISS

BREDIN PRAT

Partner
Paris

Arbitration
Partner since 2022



Louis De Bayser

BREDIN PRAT

International Relations Coordinator
Paris



DE BRAUW

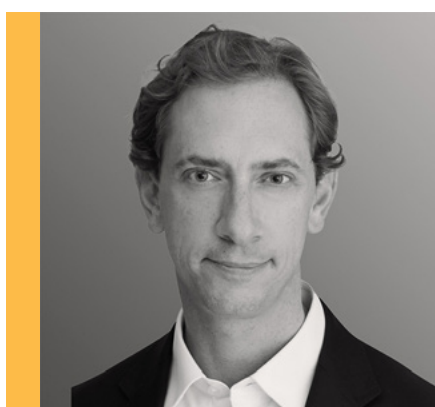


ARNE GRIMME

DE BRAUW

Partner
Amsterdam

Corporate, M&A
Partner since 1999



FERDINAND HENGST

DE BRAUW

Partner
Amsterdam, London

Financing, Restructuring
Partner since 2017



DENNIS HOREMAN

DE BRAUW

Managing Partner
Amsterdam

Disputes, Arbitration, Financial Regulation
Partner since 2013



MATTHIAS KUSCHER

DE BRAUW

Partner
Amsterdam

Disputes, Arbitration - Member of the Biennale Committee
Partner since 2018



DE BRAUW

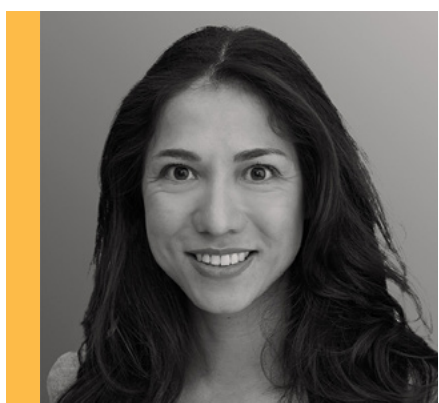


GABY SMEENK

DE BRAUW

Partner
Amsterdam

Corporate
Partner since 2013



STEPHANIE THE

DE BRAUW

Partner
Amsterdam

Competition
Partner since 2021



KLAAS DE VRIES

DE BRAUW

Managing Partner
Amsterdam

Corporate
Partner since 2012



Casilda Aguilar Castro

DE BRAUW

Head of International Relations
Amsterdam



HENGELER MUELLER



LUCINA BERGER
HENGELER MUELLER

Partner
Frankfurt

Corporate, M&A
Partner since 2017



ODA GOETZKE
HENGELER MUELLER

Partner
Düsseldorf

Corporate, M&A
Partner since 2023



PHILIPP HANFLAND
HENGELER MUELLER

Partner
Frankfurt

Dispute Resolution
Partner since 2013



MAIKE HÖLTY
HENGELER MUELLER

Partner
Berlin

M&A, Venture Capital
Partner since 2023



HENGELER MUELLER



THOMAS MÜLLER

HENGELER MUELLER

Co-managing Partner
Frankfurt

Real Estate, M&A
Partner since 1996



SEBASTIAN SCHNEIDER

HENGELER MUELLER

Partner
Frankfurt

M&A, Energy/Infrastructure - Member of the
Biennale Committee
Partner since 2018



BERND WIRBEL

HENGELER MUELLER

Co-managing Partner
Düsseldorf

Corporate, M&A
Partner since 2004



SABINE VAN SCHERPENBERG

HENGELER MUELLER

Director Corporate Affairs; International Relations
Frankfurt



SLAUGHTER AND MAY



ROBERT BYK
SLAUGHTER AND MAY

Partner
London

Financing
Partner since 2007



CLAIRE COOKE
SLAUGHTER AND MAY

Partner
London

Financing
Partner since 2021



FILIPPO DE FALCO
SLAUGHTER AND MAY

Partner
London

Corporate
Partner since 2017



DEBORAH FINKLER
SLAUGHTER AND MAY

Managing Partner
London

Disputes & Investigations
Partner since 1991



SLAUGHTER AND MAY



HARRY HECHT
SLAUGHTER AND MAY

Partner
London

Corporate - Member of the Biennale Committee
Partner since 2020



SUSAN HUGHES
SLAUGHTER AND MAY

Partner
London

Financing
Partner since 2017



CLAIRE JACKSON
SLAUGHTER AND MAY

Partner
London

Corporate
Partner since 2020



AZADEH NASSIRI
SLAUGHTER AND MAY

Partner
London

Financing - Member of the Biennale Committee
Partner since 2014

SLAUGHTER AND MAY



LORNA NSOATABE
SLAUGHTER AND MAY

Partner
London, Brussels

Competition
Partner since 2023



MEGAN SANDLER
SLAUGHTER AND MAY

Partner
London

Disputes & Investigations
Partner since 2022



RICHARD SMITH
SLAUGHTER AND MAY

Partner
London

Corporate
Partner since 2010



ROLAND TURNILL
SLAUGHTER AND MAY

Senior Partner
London

Corporate
Partner since 2004



SLAUGHTER AND MAY



LISA WRIGHT
SLAUGHTER AND MAY

Partner
London, Brussels

Competition
Partner since 2013



Jordina Smith
SLAUGHTER AND MAY

Head of International Strategy
London



URÍA MENÉNDEZ



CARLOS DE CÁRDENAS

URÍA MENÉNDEZ

Partner
Madrid

Banking & Financing - Member of the Biennale Committee
Partner since 1998



MIGUEL MARTÍNEZ GIMENO

URÍA MENÉNDEZ

Partner
Madrid

Public & Regulatory Law
Partner since 2021



ANTONIO HERRERA

URÍA MENÉNDEZ

Partner
Madrid

Corporate, M&A
Partner since 2007



HEIDI LÓPEZ

URÍA MENÉNDEZ

Partner
Madrid

International Arbitration
Partner since 2024



URÍA MENÉNDEZ



ÁNGEL PÉREZ LÓPEZ

URÍA MENÉNDEZ

Partner
Madrid

Banking & Financing
Partner since 2011



SALVADOR SÁNCHEZ-TERÁN

URÍA MENÉNDEZ

Managing Partner
Madrid

Corporate, M&A
Partner since 1996



MIGUEL STOKES

URÍA MENÉNDEZ

Partner
Lisbon

Capital Markets, M&A
Partner since 2022



Katia Yacobi

URÍA MENÉNDEZ

Director of Business Development and International Relations
Madrid



